



MISSOURI FOREST PARK

A unique choice of living...

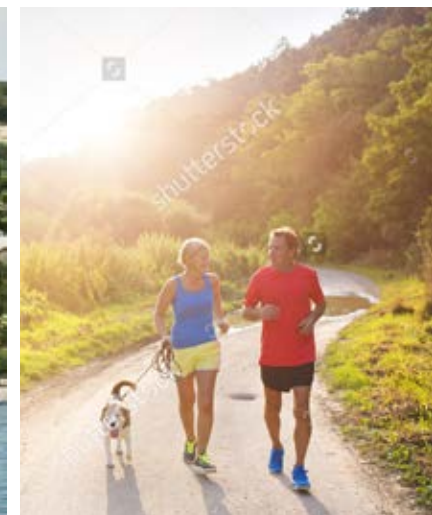


PIZZOURI FOREST PARK

Exhilarating country residences designed with life,
relaxation and entertainment in mind...

A unique choice of living...

A SELECTION OF
38 CONTEMPORARY COUNTRY HOMES



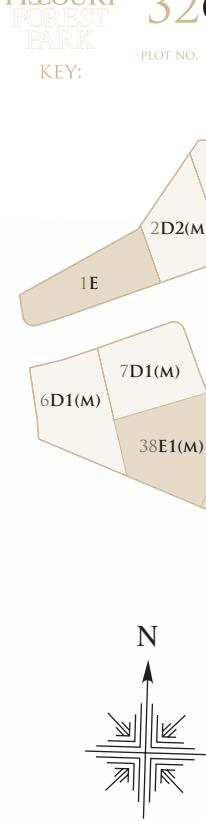
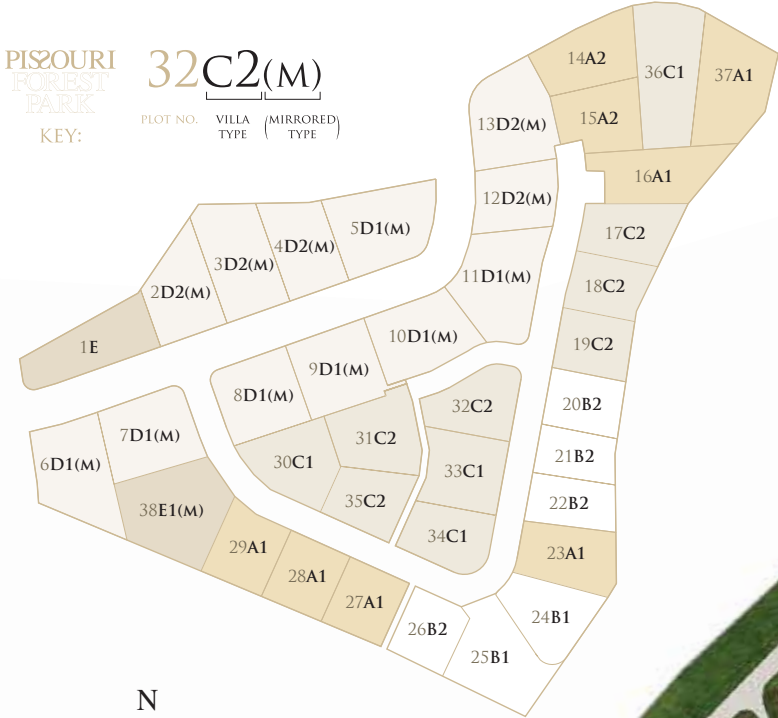


Type D1 Bungalow



PISSOURI FOREST PARK

The Pissouri Forest Park project ideally nestled on the highest hilltop of Pissouri village overlooking Pissouri Bay, one of the best beaches on the island. Just off the main Pafos to Limassol road, next to Pissouri National Century Park – National treasure of Cyprus.



PISSOURI CENTURY PARK
(Adjoining project)

TYPE	A1	A2	B1	B2	C1	C2	D1	D2	E1
BEDROOMS	3	2	3	2	3	2	3	2	3
PLOT AREA m ²	350-605	413-471	389-457	291-580	389-671	346-474	496-644	412-583	501
TOTAL COVERED AREA m ²	138	111	136	116	139	120	1130	110	120

The Pissouri Forest Park project comprises of 25 two and three bedroom Villas together with 13 two and three bedroom Bungalows. All units cater open plan living, dining & kitchen areas with private swimming pool surrounded with extensive outdoor patio & gardens.

Pissouri Forest Park benefits from the adjacent Pissouri Century Park. A dedicated environmental centre incorporating elements of education, conservation and entertainment in the middle of a rare Mediterranean coastal pine forest.

PISSOURI
FOREST
PARK



PISSOURI FOREST PARK
MASTER PLAN



PISSOURI
FOREST
PARK

✈️
PAFOS
30km

⬆️
TROODOS
50km

✈️
LARNACA
105km

🌊
AYIA NAPA
150km

MASTERPLAN

The units of the project are positioned amphi-theatrically towards to the sea. The difference between the highest level to the lowest is 18 meters, which guarantees that all villas will have unobstructed panoramic sea and Pissouri Century Park views.

The views from Pissouri Village and its surroundings are spectacular. It is set on the eastern slopes of the ridge reaching the sea at Cape Aspro, about 500 feet high on average – the highest point on the ridge is about 800 feet.

To the East it is possible to see the countryside and the shore line all the way to Limassol and even beyond, and to the north the whole of the Troodos range, including Mount Olympus, at more than 6000ft, the highest mountain on the island.



AN AWARD WINNING PROJECT

PIZOURI
FOREST
PARK

A1
VILLA



PIZOURI
FOREST
PARK

A1
VILLA



PIZOURI
FOREST
PARK

B1
VILLA



PIZOURI
FOREST
PARK

B1
VILLA



PIZOURI
FOREST
PARK

C1
VILLA



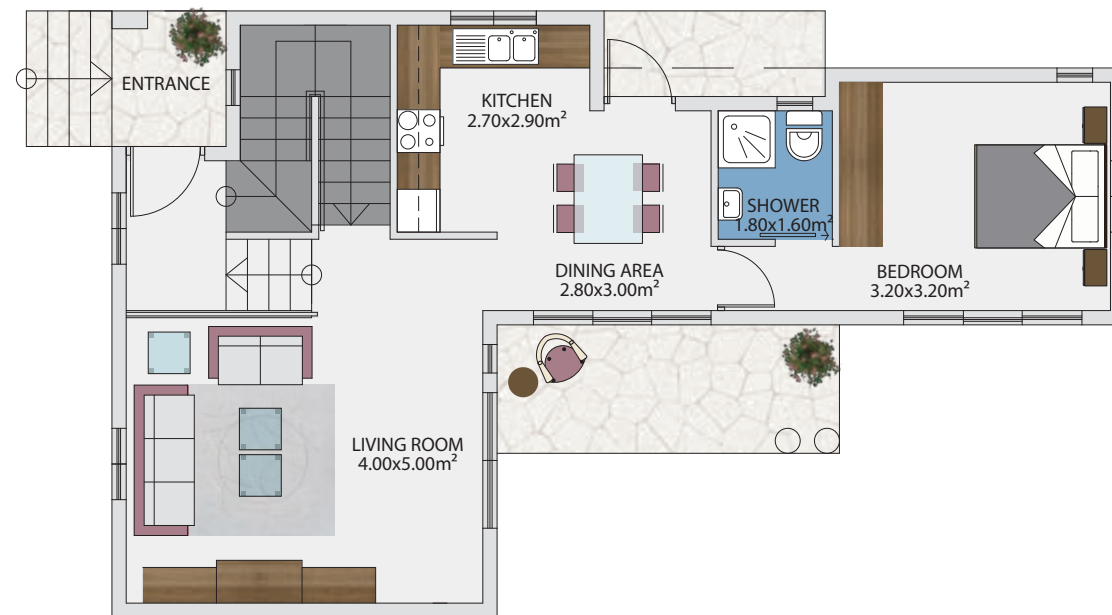
PIZOURI
FOREST
PARK

C1
VILLA

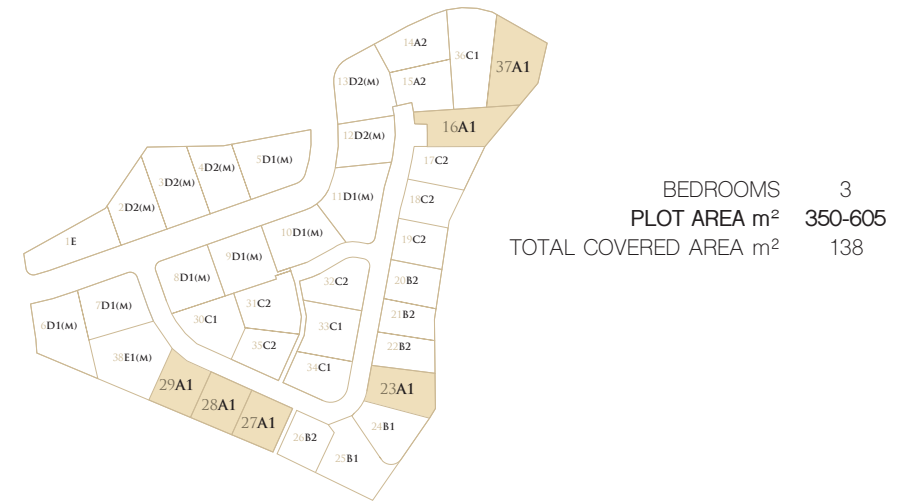


MISSOURI
FOREST
PARK

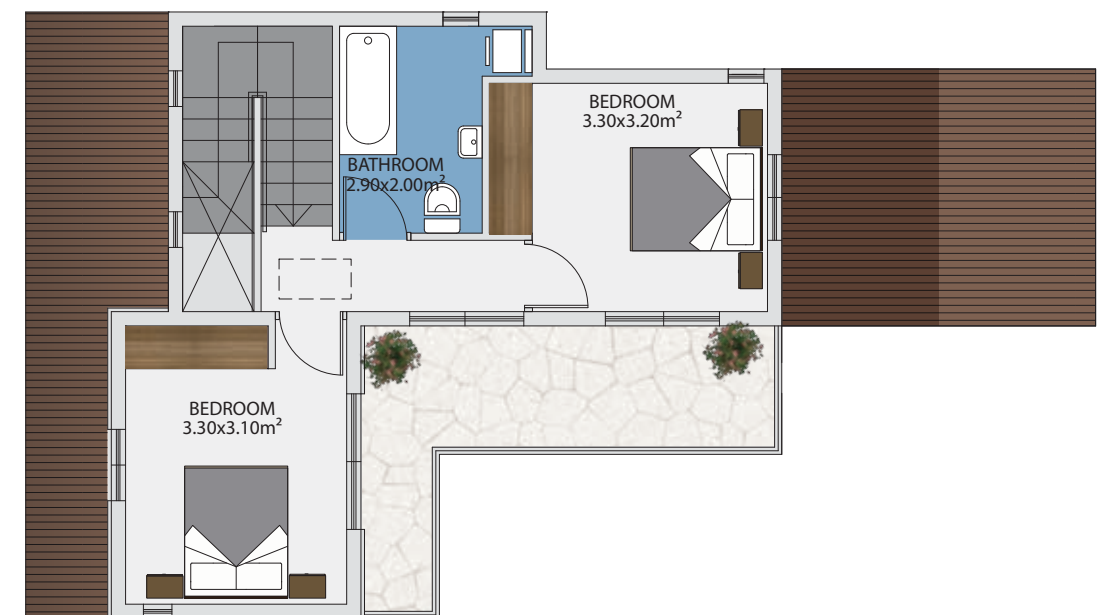
FLOOR
PLANS



Ground Floor

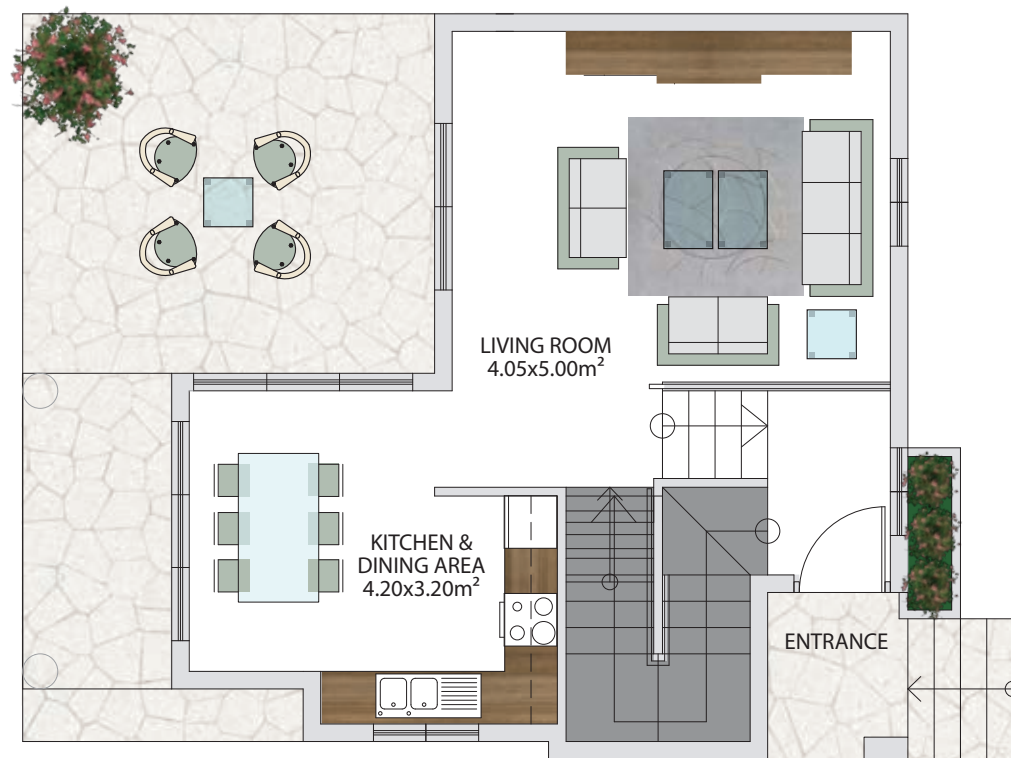


A1
VILLA

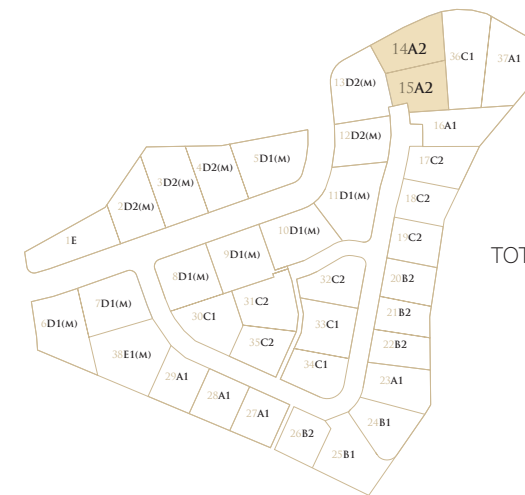


First Floor

When you're in the country, enjoy it to its full potential.



Ground Floor



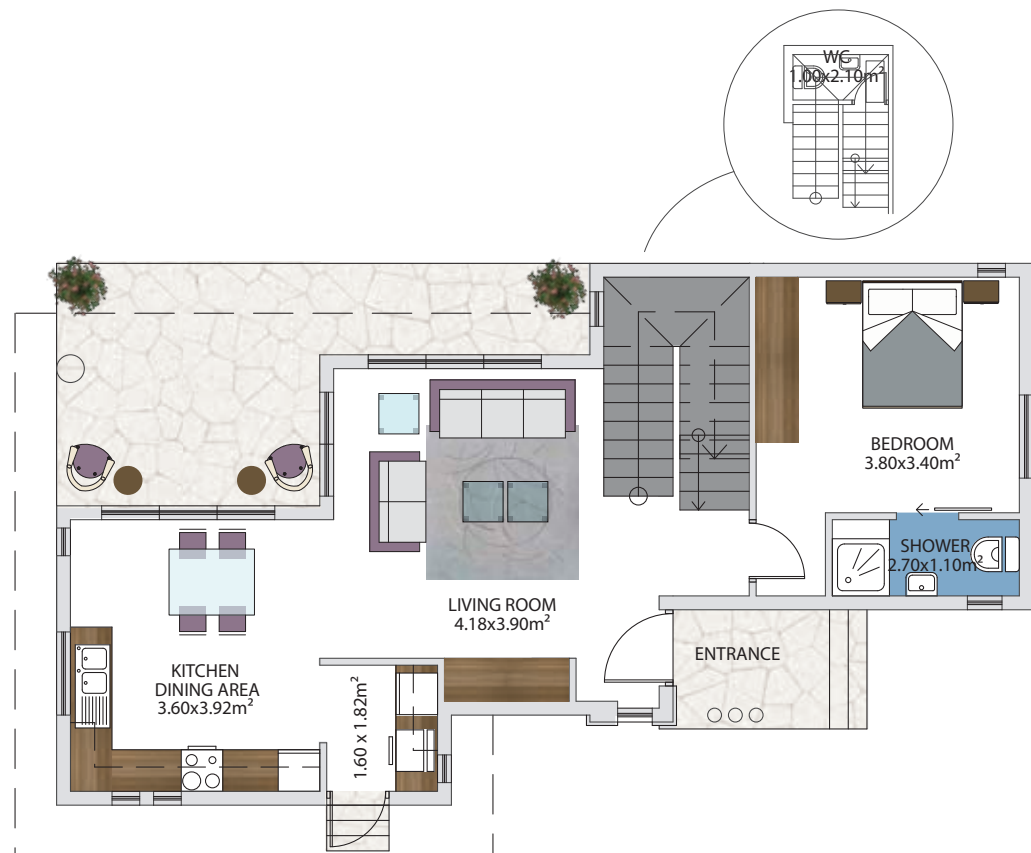
BEDROOMS 2
PLOT AREA m² 413-471
TOTAL COVERED AREA m² 111

A2
VILLA

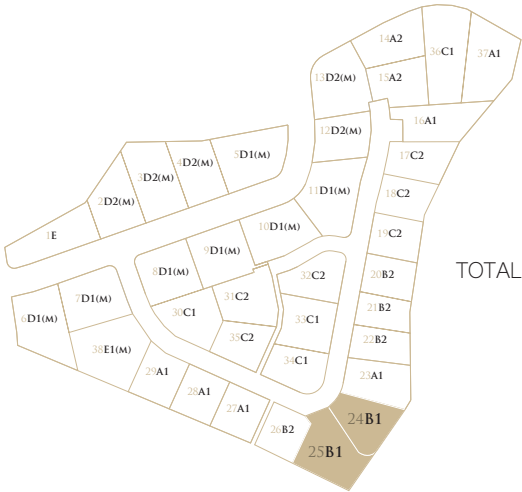


First Floor

The view of this residence offers all the inspiration one could ever want. A picture-perfect landscape.

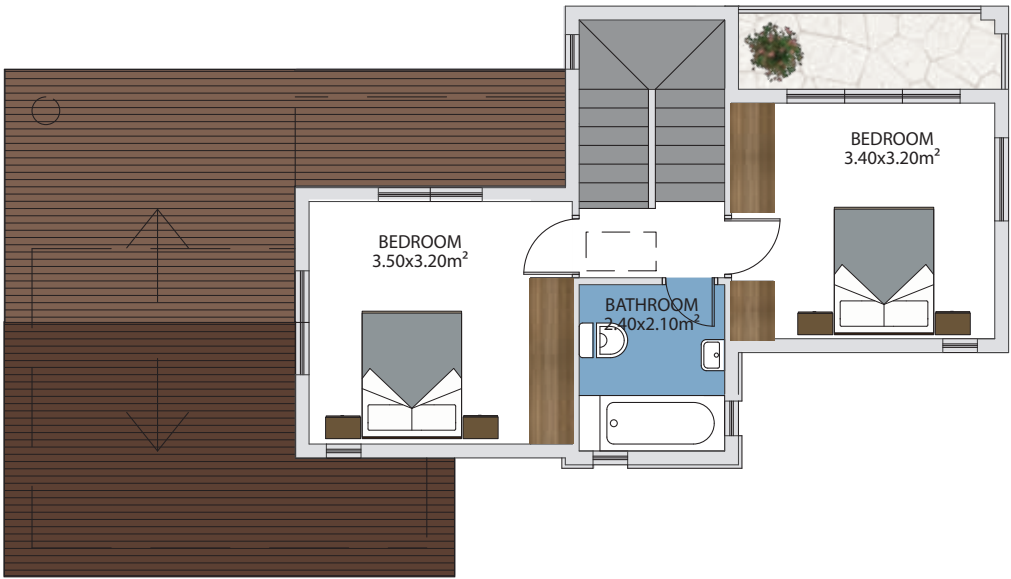


Ground Floor



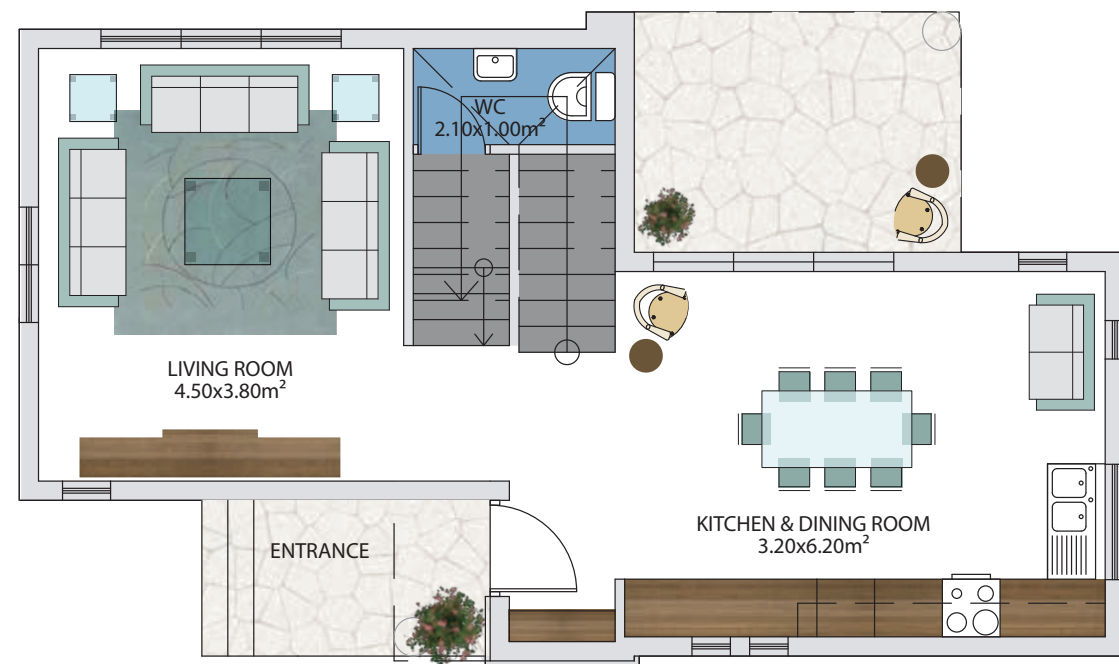
BEDROOMS 3
PLOT AREA m² 389-457
TOTAL COVERED AREA m² 136

B1
VILLA



First Floor

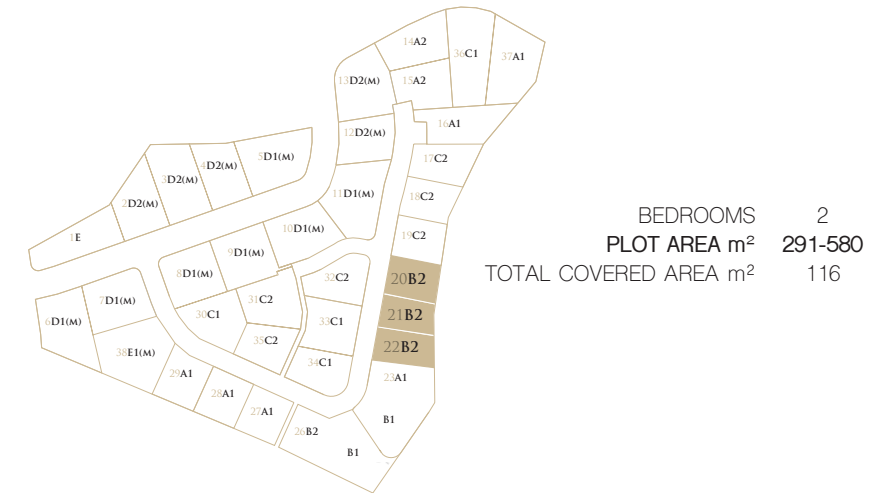
Enjoy your private garden, the swimming pool area and embrace the country charm.



Ground Floor



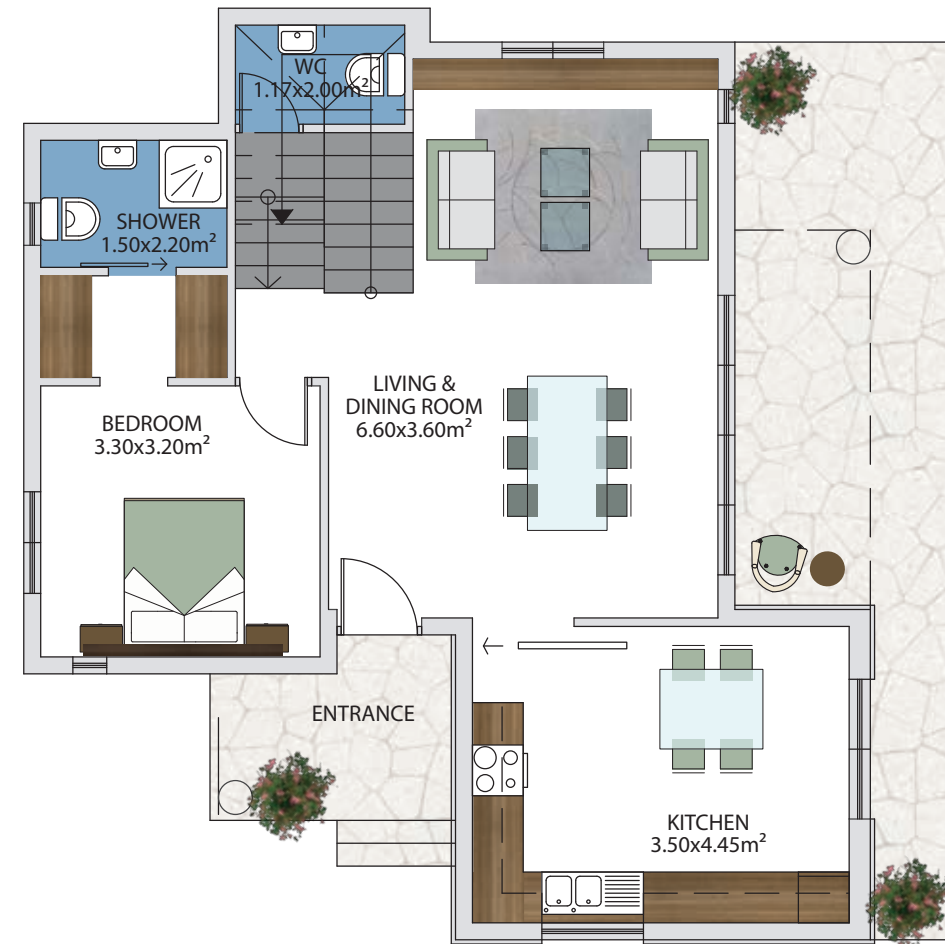
First Floor



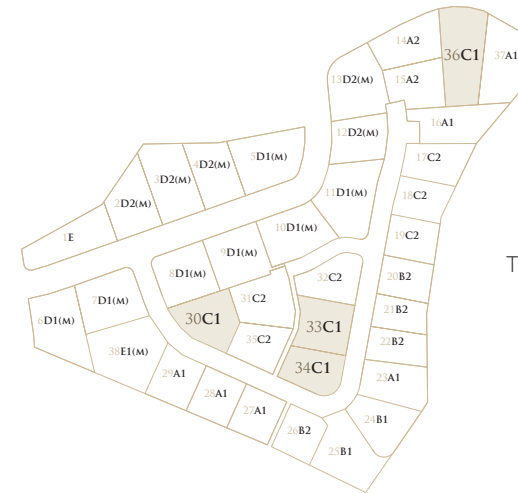
BEDROOMS	2
PLOT AREA m²	291-580
TOTAL COVERED AREA m²	116

B2
VILLA

A relaxed and quiet retreat, unwind in these graceful homes away from the hustle and bustle of everyday city life.

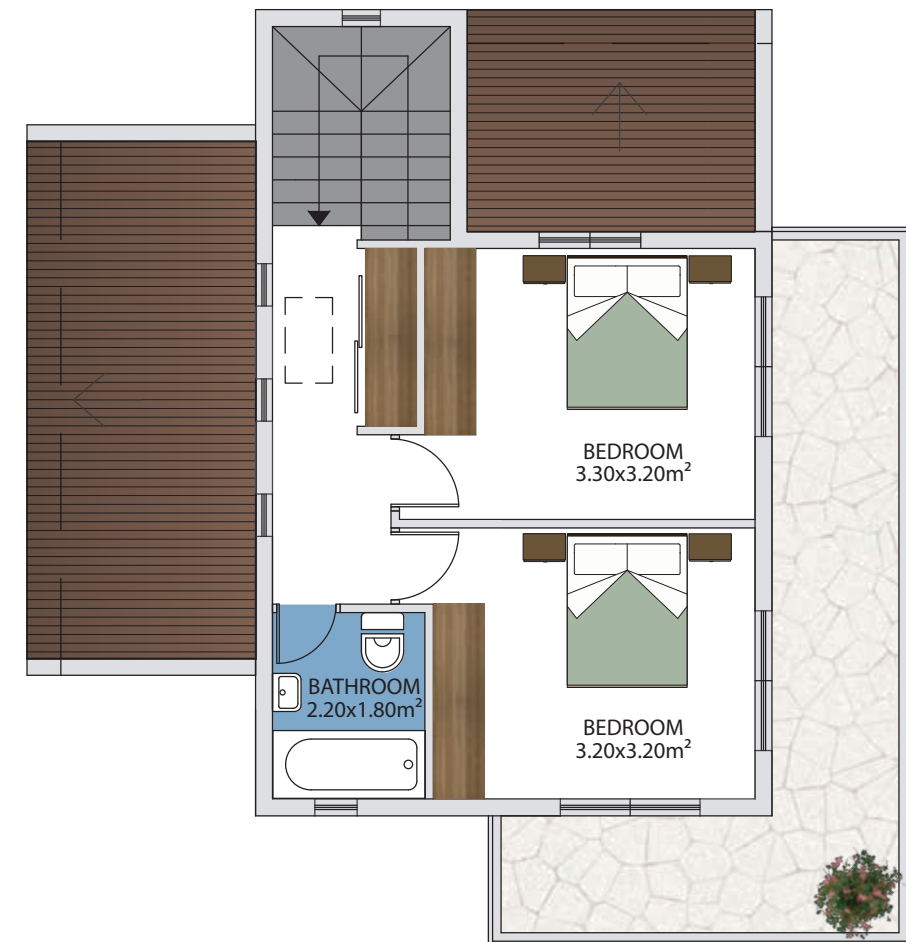


Ground Floor



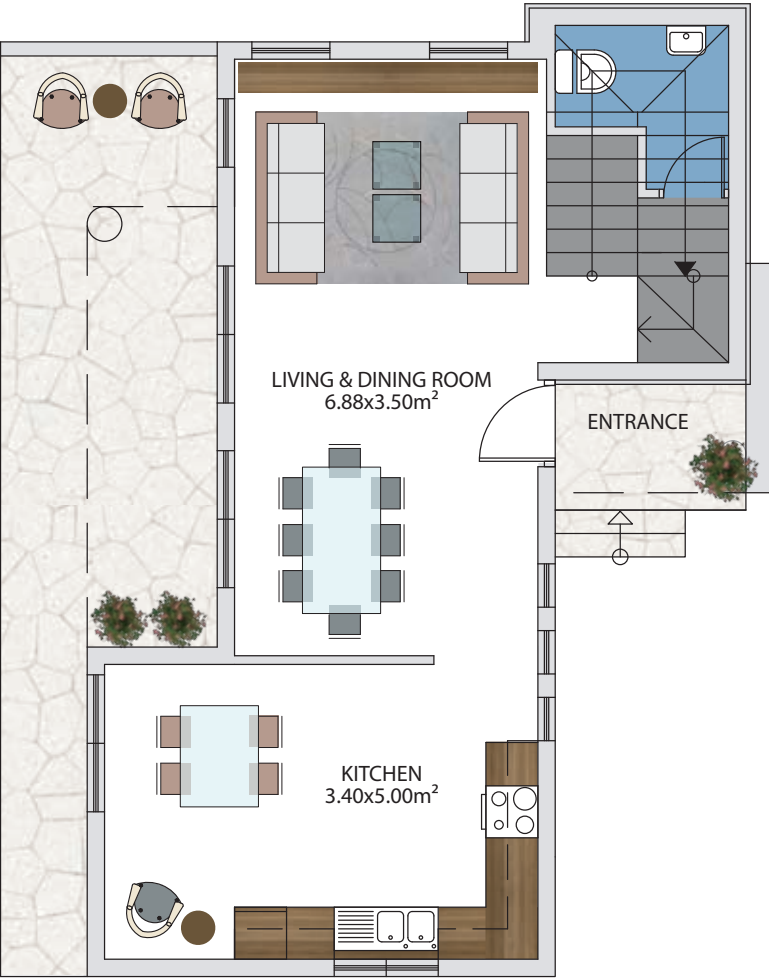
BEDROOMS 3
PLOT AREA m² 389-671
TOTAL COVERED AREA m² 139

C1
VILLA

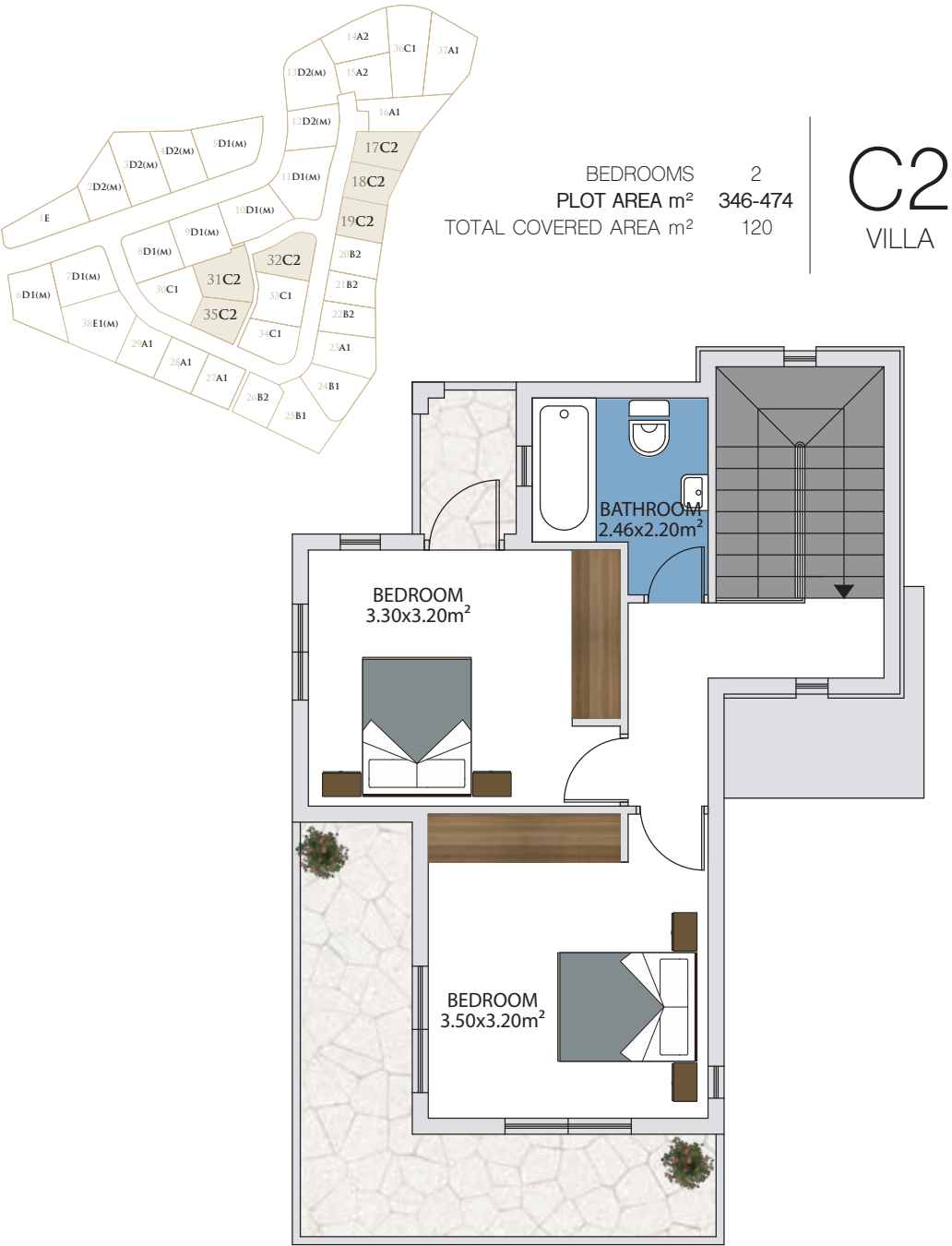


First Floor

From bedrooms to kitchen, these unique home inspire.

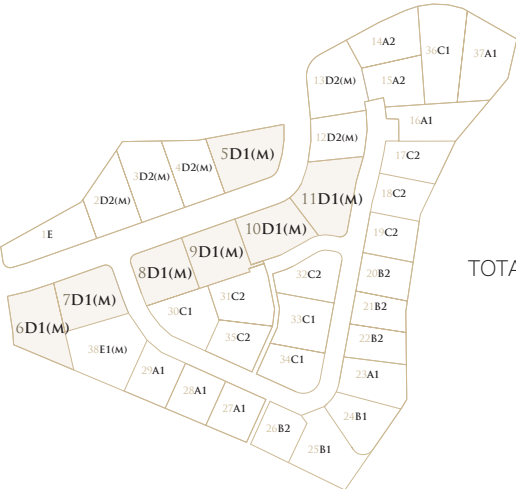


Ground Floor



First Floor

The pool-facing windows allow the natural light and views to flow into the interior.



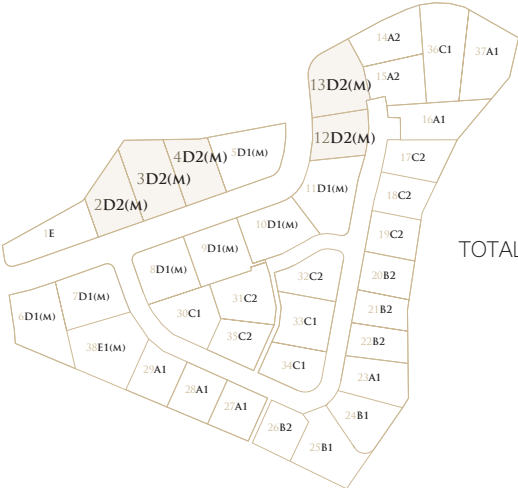
BEDROOMS 3
PLOT AREA m² 496-644
TOTAL COVERED AREA m² 130

D1 BUNGALOW



Ground Floor

A very warm and inviting style, the most compelling combination of beauty and comfort.



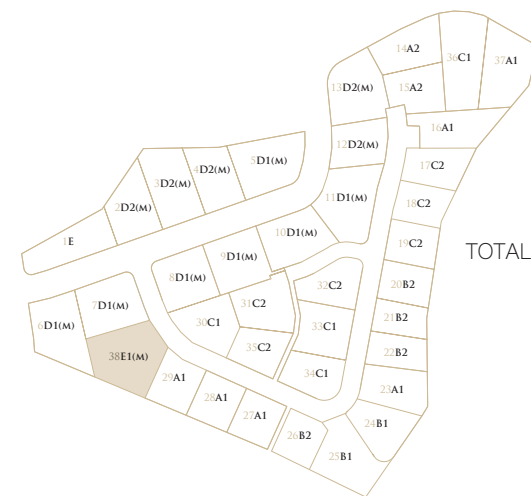
BEDROOMS 2
PLOT AREA m² 412-583
TOTAL COVERED AREA m² 110

D2
BUNGALOW



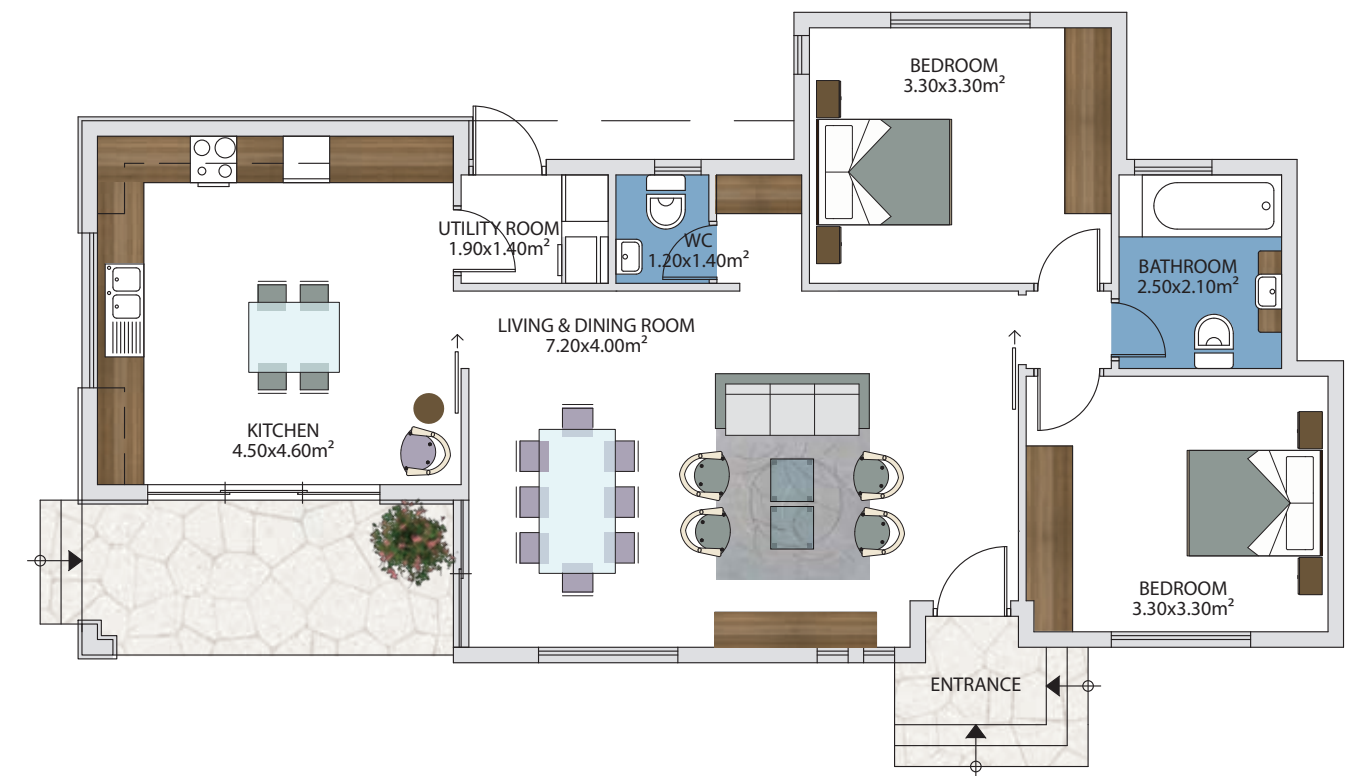
Ground Floor

Natural hues earthy materials and the beautiful scenery were the inspiration for these country residences.



BEDROOMS 3
PLOT AREA m² 501
TOTAL COVERED AREA m² 120

E1 BUNGALOW



Ground Floor

Rural, classical Mediterranean and traditional architecture with stonewalls, rustic roof tiles and modern finishes and materials.
Specially geared to take full advantage of Mediterranean glorious climate.



Type D1 Bungalow



AN AWARD WINNING PROJECT



PROPERTIES ARE FULLY COMPLETE WITH TITLE DEEDS.



Property Management

Our team offers a wide range of services for managing the properties of our proud new homeowners, who feel safe in the knowledge that their space is in our capable hands, and their interests carefully protected.

Among the services we provide are: maintenance of systems, equipment, and common areas; management of common expenses and utility payments on behalf of property owners; upkeep of financial records and statements; assistance for non-English speaking clients in navigating issues such as the purchase of property insurance.

Complimentary After Sales Support

At the Property Gallery, our biggest strength is our relationship with our clients, and we always provide that extra step to ensure maximum satisfaction. We understand that good service does not end with the sale of a property.

Rather, we remain a trusted partner for each of our clients long after they have made their purchase, assisting them with a range of complimentary after-sales services that will allow a smooth transition into their new space. We provide this assistance both through our own team of experts and our extended network of professionals.

DOWNLOAD OUR APP



THE ONLY COMPANY IN CYPRUS AND EUROPE TO WIN 27 INTERNATIONAL PROPERTY AWARDS.

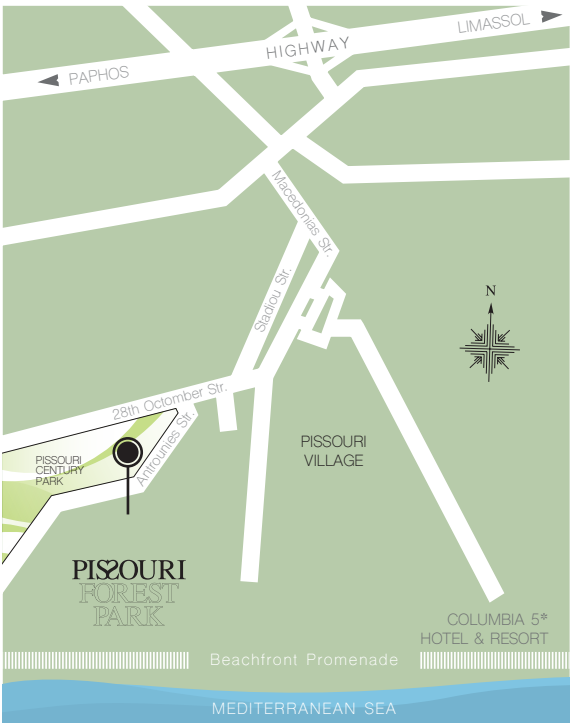
In just a decade of practice Property Gallery has grown to become one of Limassol's most admired and respected property developers. Our projects are based upon modern architectural designs, matched by supreme specifications.

Our passion for detail and expertise has been highly accepted and appreciated, taking us just seven years to accomplish a total of twenty seven international property awards and furthermore, achieving seven Best European awards in the commercial, residential and mixed-use sectors.



DISCLAIMER

Every effort has been made to provide accurate measurements and a fair description of the properties included within this literature, but this information cannot be guaranteed.This literature is only intended to provide an indication of the general style of our development and forms no kind of contract. Property Gallery Ltd reserves the right to alter the design and specification, external finishes and elevation treatments where shown at any time, for any reason without prior notice. Property images are computer generated impressions and not necessarily to scale, and landscaping in the Site Plan is for illustrative purposes. Floor plans are not to scale and all measurements are approximate.



LOCATION MAP

CONTACT DETAILS

КИПР / CYPRUS

8000 83 84 Cyprus Toll-Free
+357 25 322 113 Cyprus Main Office

РФ / RUSSIA

8(800) 775-8-234 Бесплатно По России / Russia Toll-Free
+7 495 545 4783 Москва / Moscow

УКРАИНА / UKRAINE

0 (800) 80 21 84 Бесплатно По Украине / Ukraine Toll-Free
+380 44 3000 237 Киев / Kiev

CHINA

400 120 3569 China Toll-Free

www.cygallery.ru

www.cypruspropertygallery.com



PROPERTY
GALLERY

www.cygallery.ru
www.cypruspropertygallery.com